

**Kaiser Permanente Southern California  
Thriving Schools Partnership Grants Phase 2**

---

**Initiative Launch Webinar  
February 9, 2017 | 1-2 pm**

Please connect to the telephone using the toll free number, access code, and pin provided to you in the confirmation email or in the “audio” panel on the right of your screen.

## Welcome and Purpose

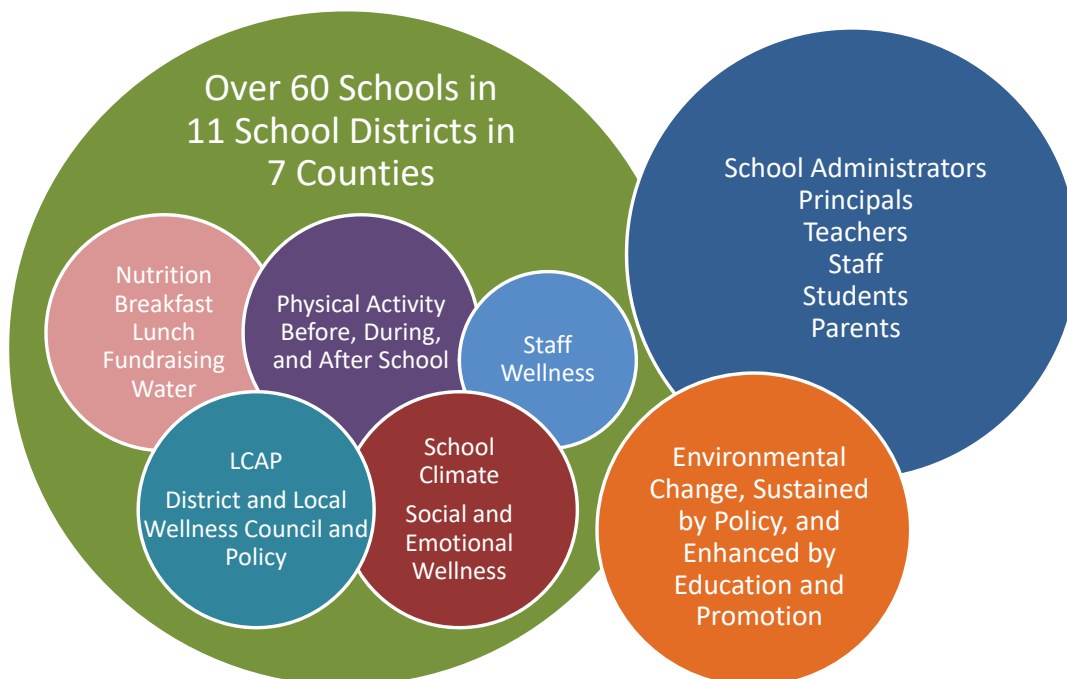
- Review TSPG Phase 2 Framework
- Discuss expectations for implementation and clarify technical assistance and evaluation role
- Continue and enhance grantees learning and peer networking!



## Thriving Schools Partnership Framework

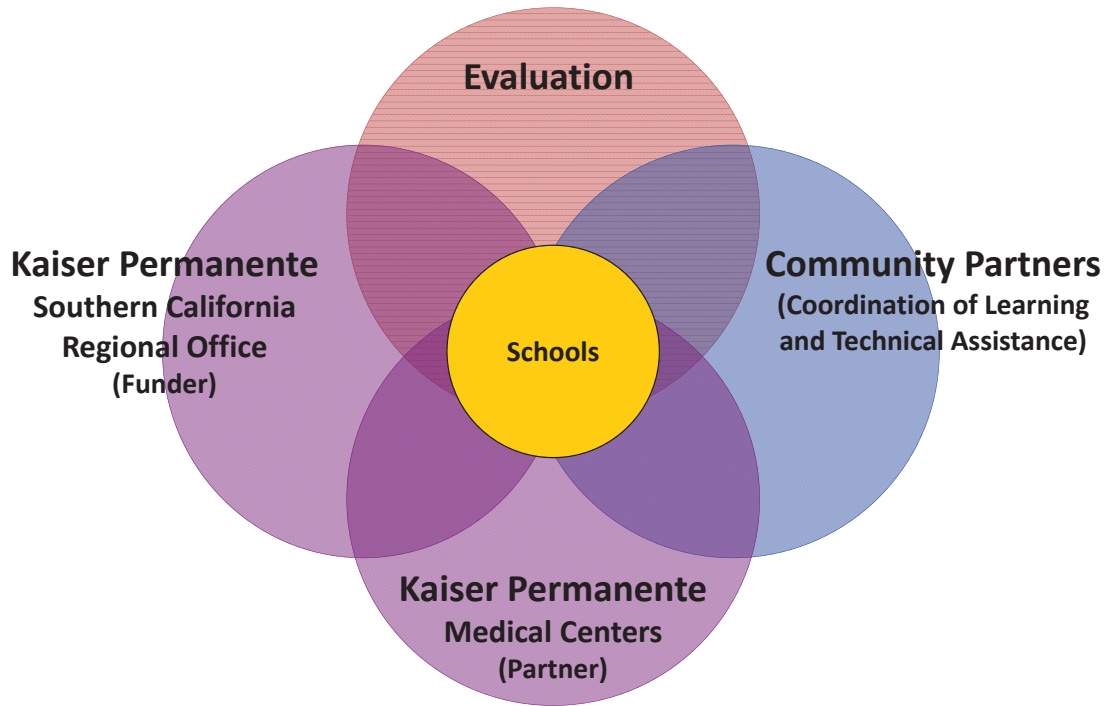


## Grantees and Strategies



---

## Team Structure



---

## Community Partners

## Project Office Goals

### ***Our team will:***

- Facilitate and accelerate learning
- Provide strategic and logistical support
- Offer or coordinate comprehensive technical assistance



*Judy Harper*



*Arpiné Shakhbandaryan*



*Pia Bañez*

## Objectives

**Increase the implementation capacity of grantees.**



Tailored Training  
and  
Coaching Support

Identify TA Needs  
and Coordinate  
Specialized TA

Referral  
to  
Resources

## Objectives

Accelerate learning by grantees and partners for more effective project implementation.



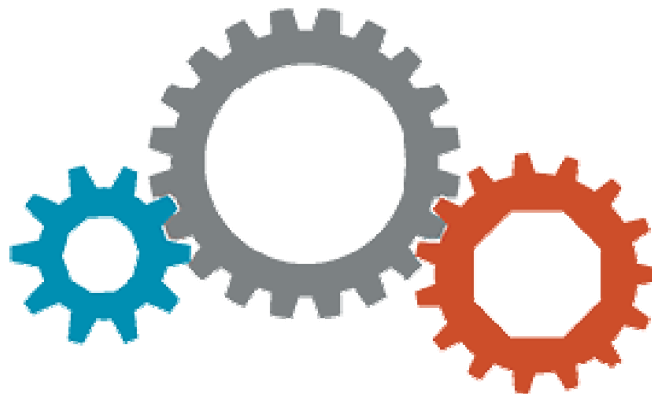
Learning Circle  
and  
Learning Community

Peer Learning Exchange  
and  
Site Visit

Virtual Brown Bag  
and  
Webinar

## Objectives

Coordinate and provide logistical support for the initiative.



Coordinate  
Grant Activities

Quarterly  
Check-Ins

Annual  
Site Visits

---

## Save the Date

### **Childhood Obesity Conference**

May 30 – June 2, 2017

Manchester Grant Hyatt

San Diego, CA

### **Southern California Thriving Schools Pre-Conference Session**

May 30, 2017

Manchester Grant Hyatt

San Diego, CA

11:00 am - 12:00 pm Registration, Lunch and Networking

12:00 noon - 5:00 pm Program

---

## Save the Date

### **Fire Up Your Feet Webinar**

March 21, 2017 from 3-4 PM

### **Spring 2017 Challenge Dates**

April 15 – May 15, 2017

<http://fireupyourfeet.org/>

### **Julie McDonald**

Fire Up Your Feet Senior Manager

Safe Routes to School National Partnership

510-684-0051

[juliem@fireupyourfeet.org](mailto:juliem@fireupyourfeet.org)

---

## Thriving Schools Evaluation

---

### KP's Evaluation Guiding Principals



## Evaluator Support

- Support with the development of evaluation plans
- Support with development/selection of data collection tools
- Provide guidance and TA with data collection activities
- Monitor the evaluation to ensure data quality
- Analyze data to identify cross-site findings
- Communicate findings to support program improvement
- Facilitate quarterly check-in calls



**Ama Atiedu, MS, MSOD**

## How You Will Engage In Evaluation

- Designate a staff person to be the evaluation liaison
- Co-create evaluation plans
- Conduct all data collection activities
- Meet with evaluation consultant on a quarterly basis
- Help interpret and apply the results



## Phase 1 Learning Questions



Are school policies, environments, programs changing?



Are student's knowledge, attitude, and behavior around healthy eating and active living?



Are teachers'/staffs' knowledge, attitude, and behavior around healthy eating and active living?



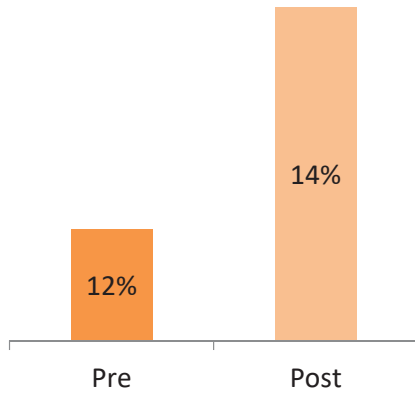
What impact did individual strategies (i.e. active recess, PE improvements, and cafeteria changes) have on those targeted?



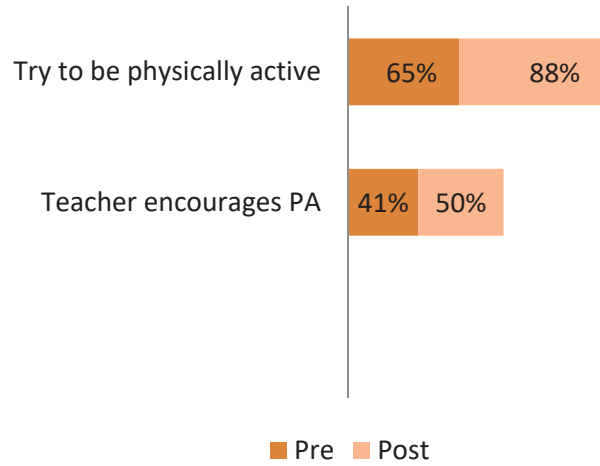
| Changes                               | Description                                                                                                     | # of Districts (N=10) |
|---------------------------------------|-----------------------------------------------------------------------------------------------------------------|-----------------------|
| <b>Environment</b>                    |                                                                                                                 |                       |
| School Meal                           | Installed salad bars, added more fruits and vegetables/new menu items, implemented Smarter Lunchroom strategies | 3                     |
| Healthy Beverages                     | Removed of flavored milk, installed hydration stations                                                          | 3                     |
| Infrastructure Improvements/Equipment | Installed Peaceful Playgrounds, installed soccer nets, restriped fields                                         | 3                     |
| <b>Policy</b>                         |                                                                                                                 |                       |
| Healthy Snack Policy                  | Implemented Zero cupcake policy, No Junk Food Policy                                                            | 1                     |
| Healthy Fundraising Policy            | Offered non-food, healthy food, or physical activity fundraisers                                                | 1                     |
| Revised District Wellness Policy      | Strengthened language, developed monitoring system, established school site wellness councils                   | 8                     |
| <b>Systems/Programs</b>               |                                                                                                                 |                       |
| Staff Wellness                        | Offered nutrition ed/cooking classes, exercise classes, gym membership reimbursement, challenges                | 4                     |
| Parent Engagement                     | Parent volunteers during lunchtime/recess                                                                       | 1                     |
| Active Recess                         | Stations and games during recess time                                                                           | 7                     |
| PE Improvements                       | Implemented new PE curriculum (COPA, SPARK, custom)                                                             | 3                     |
| In-Classroom PA/Instant Recess        | Offered instant recess breaks, used of Fit Kits, exercise boards                                                | 4                     |
| Before/Afterschool PA                 | Offered more physical activity during afterschool program, 100 Mile Club, before and after school walking clubs | 2                     |
| Nutrition Ed/Promotion                | Offered cooking classes, nutrition classes, Harvest of the Month, Rethink Your Drink                            | 4                     |

2

Change in the proportion of students who engage in at least 60 minutes of physical activity per day

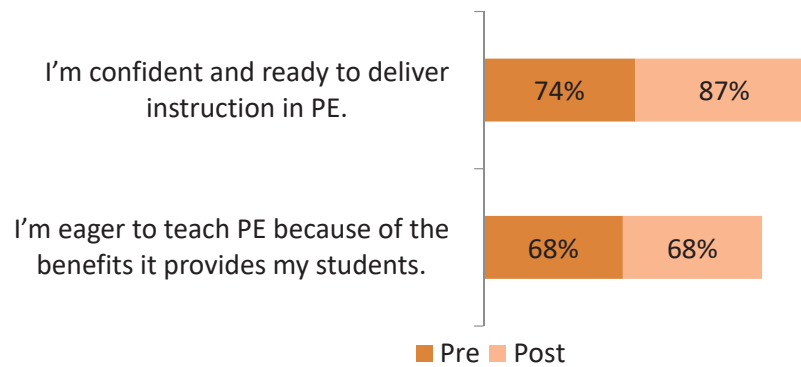


Change in the proportion of students who try to be physically active and feel encouraged by the teacher to be physically active



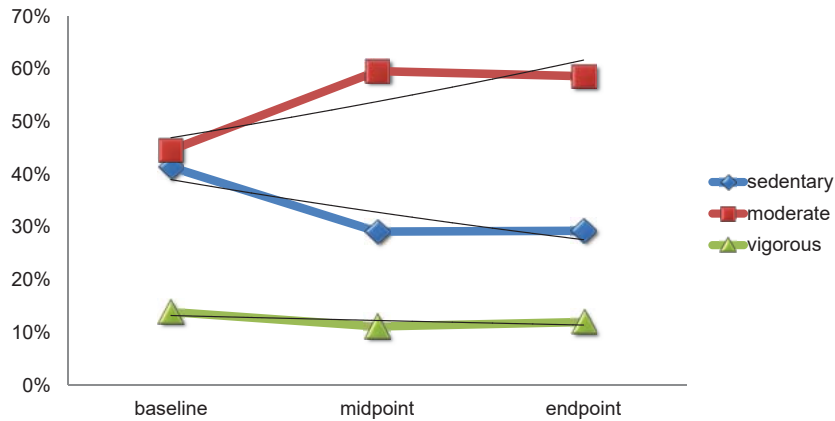
3

Change proportion of teachers who feel confident in delivering PE and feel eager to provide PE





### Change in the proportion of students who engage in physical activity during PE



- Lawndale Elementary School District provided training and coaching support to teachers to implement COPA PE curriculum

## Next Steps

**First Quarterly Check-In &  
In-Person Evaluation Planning Meeting**  
March 2017

**Finalize Evaluation Plans**  
April 2017

**Baseline Data Collection**  
December 2017



KAISER PERMANENTE®



GroupHealth.  
RESEARCH INSTITUTE

## Thank You for Participating

Please complete the survey prompted at the end of this webinar.

---

### Ceping Chao

Project Manager  
Kaiser Permanente,  
Southern California Region  
626-405-6158  
[Ceping.Chao@kp.org](mailto:Ceping.Chao@kp.org)

### Clara Steimberg

Project Manager  
Kaiser Permanente,  
Southern California Region  
626-405-6736  
[Clara.V.Steimberg@kp.org](mailto:Clara.V.Steimberg@kp.org)

### Roberta Tinajero-Frankel

Community Benefit Manager  
Kaiser Permanente,  
Southern California Region  
626-405-5329  
[Roberta.D.Tinajero@kp.org](mailto:Roberta.D.Tinajero@kp.org)

### Ama Atiedu

Consultant  
Center for Community Health and Evaluation  
213-346-3279  
[atiedu.a@ghc.org](mailto:atiedu.a@ghc.org)

### Arpiné Shakhbandaryan

Program Manager  
Community Partners  
213-346-3280  
[ashakhbandaryan@CommunityPartners.org](mailto:ashakhbandaryan@CommunityPartners.org)

### Judy Harper

Sr. Program Director  
Community Partners  
213-346-3215  
[jharper@CommunityPartners.org](mailto:jharper@CommunityPartners.org)