





SCAL THRIVING SCHOOLS PARTNERSHIP GRANTS: EVALUATION

Ama Atiedu, Evaluation Consultant
Center for Community Health and Evaluation

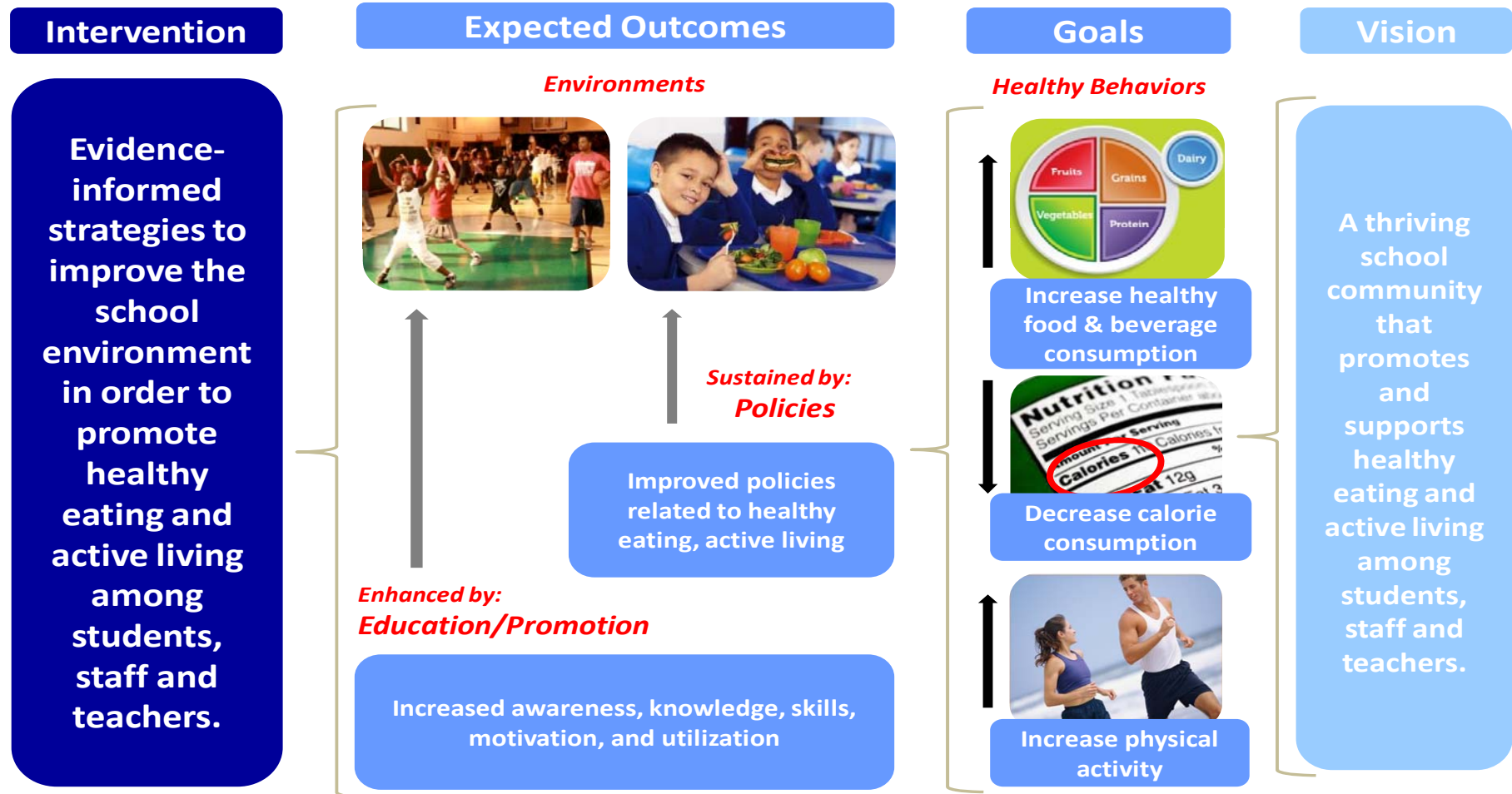
Outline of agenda

-  Overview of the TSPG Evaluation Questions
-  Review Evaluation Activities
-  Review Roles
-  Next Steps

OVERVIEW OF TSPG EVALUATION QUESTIONS

Thriving School Framework

THRIVING SCHOOLS PARTNERSHIP GRANTS FRAMEWORK



Focus Area

Strategy Implementation

School and School District Context

Student & Teacher Changes

Scale and Sustainability

EVALUATION ACTIVITIES

EVALUATION METHODS & ACTIVITIES



TIMELINE

Data	Baseline
Quarterly Check-In Calls	Quarterly
Key informant interviews	March/April (baseline) November/December (follow-up)
School Health Index	March/April
Learning Community Meetings	TBD
Site-Specific Evaluations	Ongoing

ROLES



WHAT EVALUATION TEAM WILL DO

- Track status and maintain DOCC
- Conduct key informant interviews
- Support school districts with completing the SHI
- Conduct capacity building and data collection activities during Learning Community meetings
- Support sites with development of evaluation plans
- Analyze and summarize data collected by school districts

YOUR ROLE

- Assign an evaluation liaison
- Participate in quarterly check in calls
- Collaborate on identifying partners for key informant interviews
- Complete the SHI for two schools
- Participate in Learning Community meetings
- Work with evaluator to develop site-specific evaluation plans
- Collect and submit site-specific data



Primary evaluation contact:

Ama Atiedu

atiedu.a@ghc.org

(213) 840-2823
